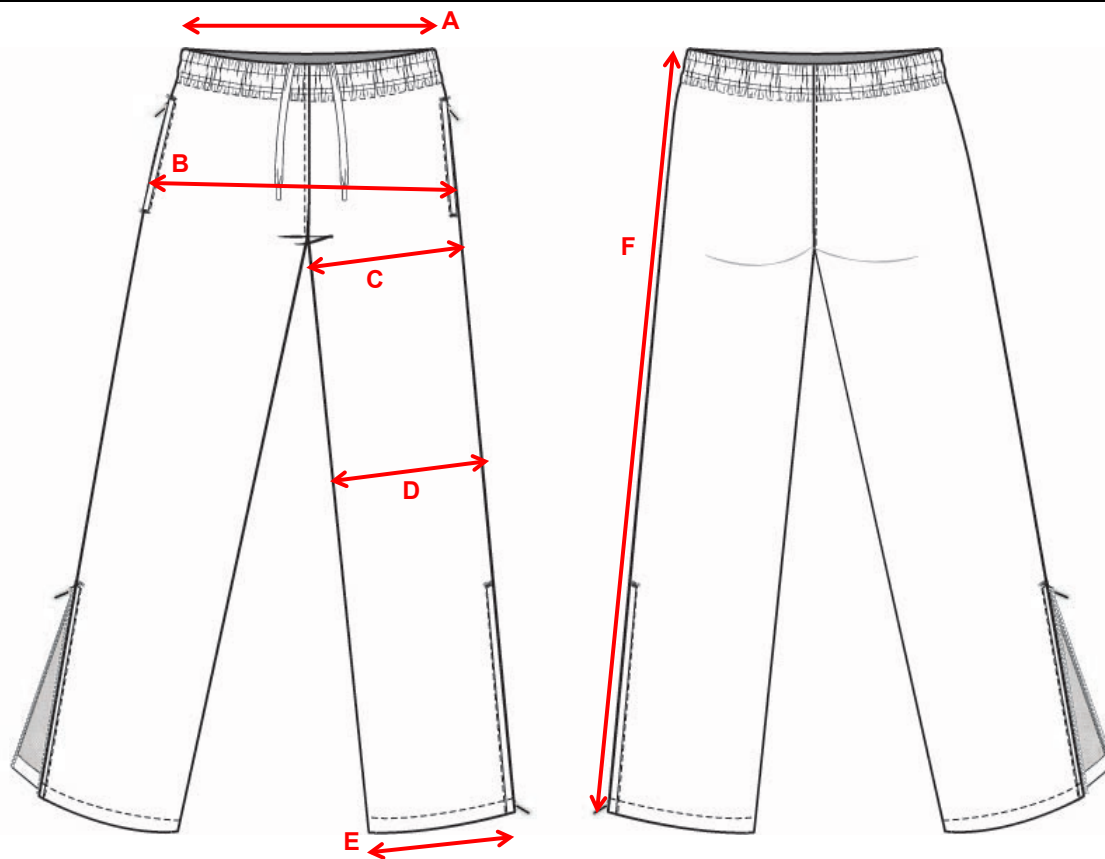


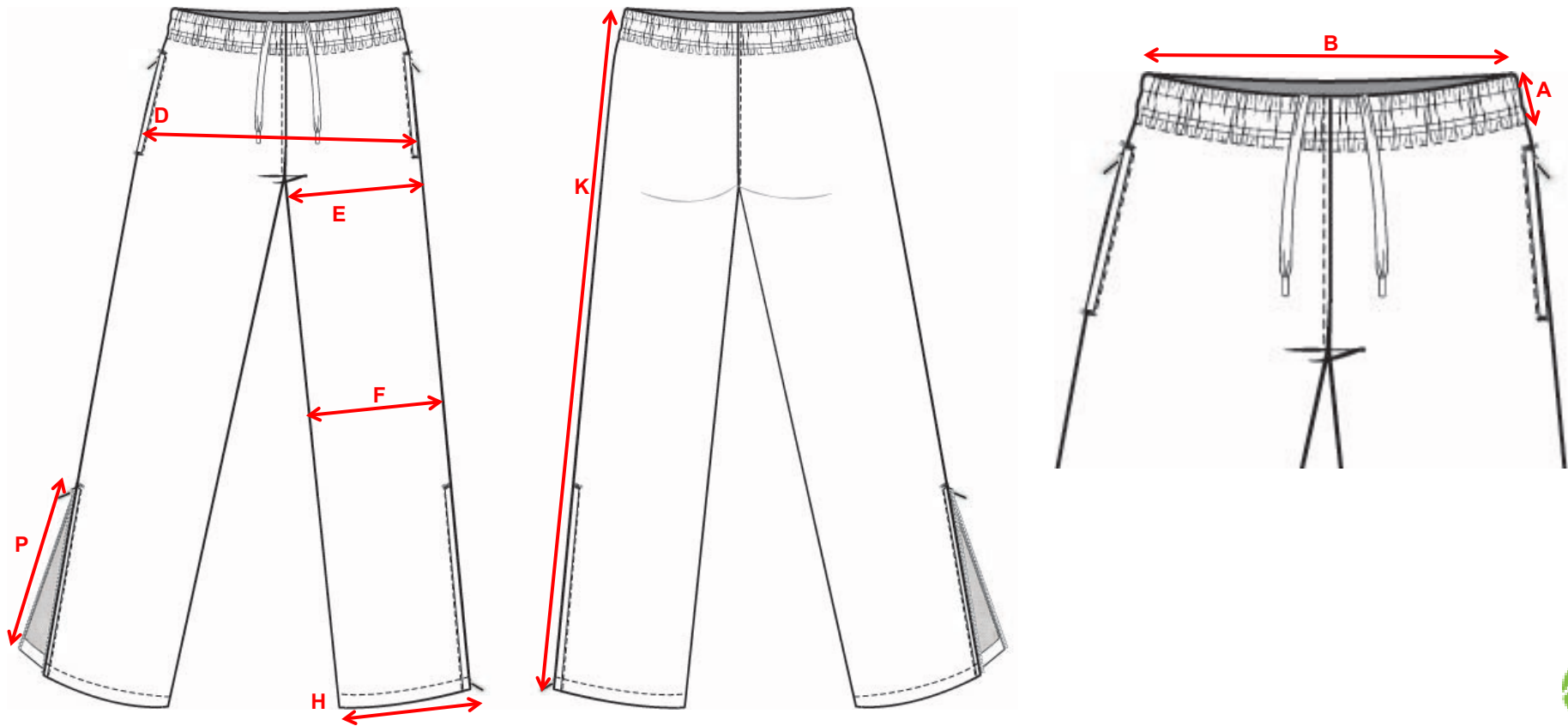
ACT0106M - ACTIVTEK MENS LIGHT TRACK PANT

		2XS	XS	S	M	L	XL		2XL	3XL	4XL	5XL		
A	WAISTBAND - RELAXED	32	34.5	37	39.5	42	44.5		47	49.5	52	54.5		
B	1/2 HIP - 20CM FROM TOP OF WAIST	52	54.5	57	59.5	62	64.5		68.25	72	75.75	79.5		
C	1/2 THIGH - 2CM BBELOW CROTCH	32.75	34	35.25	36.5	37.75	39		41	43	45	47		
D	1/2 KNEE - 1/2 WAY FROM CROTCH TO HEM	25	25.75	26.5	27.25	28	28.75		28.75	28.75	28.75	28.75		
E	1/2 LEG OPENING	20	20.5	21	21.5	22	22.5		22.5	22.5	22.5	22.5		
F	OUTLEG - INCL. WAISTBAND	102.5	103.5	104.5	105.5	106.5	107.5		108.5	109.5	110.5	111.5		



ACT0106F - ACTIVTEK WOMENS LIGHT TRACK PANT

		2XS	XS	S	M	L	XL		2XL	3XL	4XL	5XL	
A	WAISTBAND DEPTH	4	4	4	4	4	4		4	4	4	4	
B	WAIST - RELAXED	32	34.5	37	39.5	42	44.5		48.25	52	54.5	57	
C													
D	1/2 HIP - 3CM UP FROM CROTCH	47.5	50	52.5	55	57.5	60		63.75	67.5	70	72.5	
E	1/2 THIGH CIRCUM. - 2CM FROM CROTCH	29.5	31.05	32.6	34.15	35.7	37.25		39.5	41.75	43.3	44.85	
F	1/2 KNEE CIRCUM. - 35CM FROM CROTCH	23.4	24.5	25.6	26.7	27.8	28.9		30.3	31.7	32.8	33.9	
G													
H	1/2 LEG OPENING	20.72	21.36	22	22.64	23.28	23.92		24.76	25.6	26.24	26.88	
I													
J													
K	OUTLEG - INCL. WAISTBAND	100	101	102	103	104	105		106	107	108	109	
L													
M													
N													
O													
P	SIDE SEAM ZIP LENGTH	30	30	30	30	30	30		30	30	30	30	



		4	6	8	10	12	14	16				TOL(+/-)
B	WAIST - RELAXED	21	23	25	27	28.5	30	31.5				0.5
C	WAIST - STRETCHED	37.5	39.5	41.5	43.5	45	46.5	48				1
D	1/2 HIP - 3CM UP FROM CROTCH	41.5	43.5	45.5	47.5	49	50.5	52				1
K	OUTLEG - INCL. WAISTBAND	63	71	79	87	91	95	99				0.5
L	INLEG	45.5	51.5	57.5	63.5	66	68.5	71				0.5

