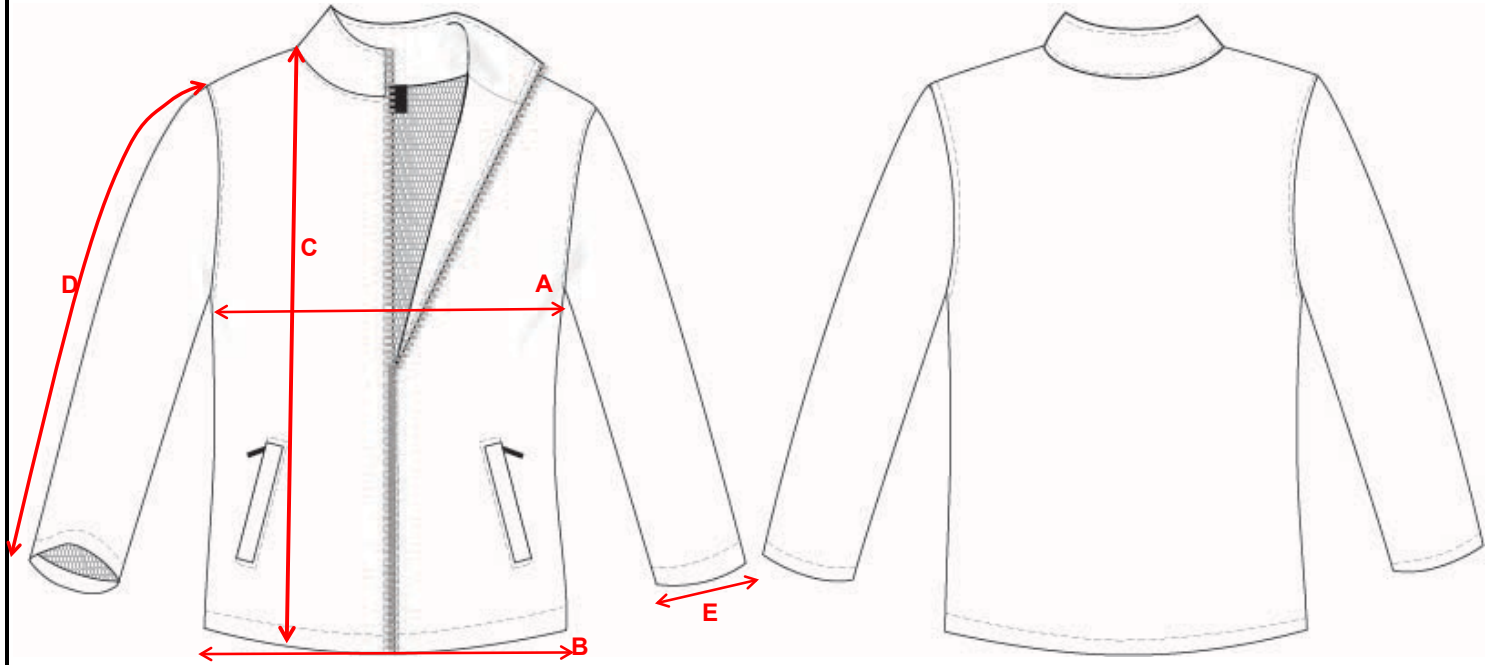


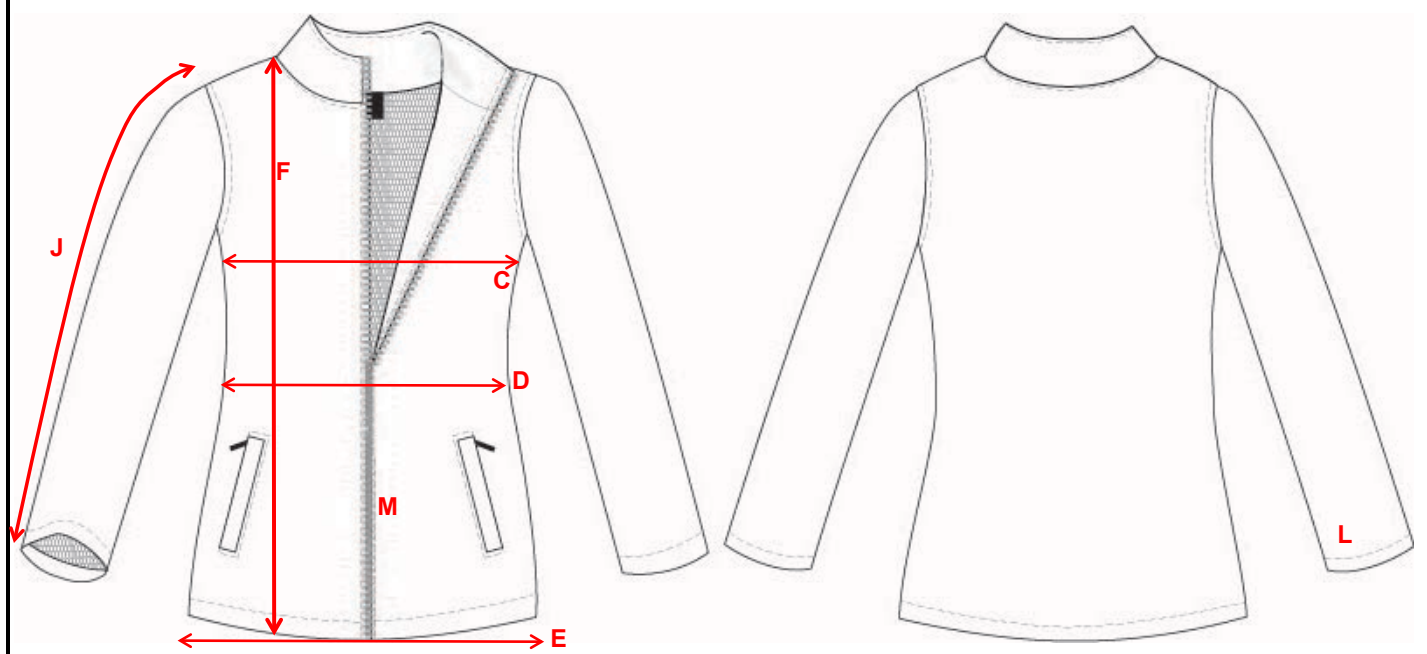
ACT0107M - ACTIVEK MENS LIGHT TRACK JACKET

		2XS	XS	S	M	L	XL		2XL	3XL	4XL	5XL	6XL	
A	1/2 CHEST	50	52.5	55	57.5	60	62.5		66.25	70	73.75	77.5	81.25	
B	1/2 HEM	50	52.5	55	57.5	60	62.5		66.25	70	73.75	77.5	81.25	
C	FRONT LENGTH - HPS TO HEM	68	69.5	71	72.5	74	75.5		77.5	79.5	81.5	83.5	85.5	
D	SLEEVE LENGTH	67	68	69	70	71	72		73	74	75	76	77	
E	1/2 SLEEVE OPENING	11.72	12.04	12.36	12.68	13	13.32		13.82	14.32	14.82	15.32	15.82	



ACT0107F - ACTIVEK WOMENS LIGHT TRACK JACKET

		2XS	XS	S	M	L	XL		2XL	3XL	4XL	5XL	
C	1/2 BUST - 2.5CM FROM U/ARM	45	47.5	50	52.5	55	57.5		61.25	65	68.75	72.5	
D	1/2 WAIST - 15CM FROM U/ARM	41	43.5	46	48.5	51	53.5		57.25	61	64.75	68.5	
E	1/2 HEM	46	48.5	51	53.5	56	58.5		62.25	66	69.75	73.5	
F	FRONT LENGTH FROM HSP	64	65	66	67	68	69		70	71	72	73	
J	SLEEVE LENGTH	60.72	61.36	62	62.64	63.28	63.92		64.56	65.2	65.84	66.48	
K	1/2 SLEEVE OPENING	11.36	11.68	12	12.32	12.64	12.96		13.46	13.96	14.46	14.96	



		4	6	8	10	12	14	16					TOL(+/-)
C	1/2 CHEST	39	41	43	45	47	49	51					1
D	1/2 HEM	39	41	43	45	47	49	51					1
E	FRONT LENGTH - HPS TO HEM	46	50	54	57	60	63	66					1
I	SLEEVE LENGTH	39	43	47	50	53	56	59					1

